

# Year in Review 2007-2008

*Rosie Rowe - Executive Officer*



**Southern Grampians & Glenelg  
Primary Care Partnership**

# Purpose

To facilitate **partnerships, increase capacity and integration** to achieve better health and wellbeing of our communities



# Partners/networks



Southern Grampians & Glenelg  
Primary Care Partnership



# Deliverables

1. Partnership
2. Health Promotion
3. Service Coordination
4. Integrated Chronic Disease Management

**Year 2 of Strategic Plan 2006-09**

**\$240,000 DHS core funding**



# Strategic Priorities

1. Action on **priority community issues**
2. **System efficacy**
3. Effective and efficient **partnership**
4. **Financial** viability

# Strategic Priority 1 - Action on Community Issues

## i) Drought/climate change

- New members – 20 organisations
- 2 Business Breakfasts
- Drought postcards – approx.20,000 farmers; ABC Stateline
- Mental Health First Aid – 120 people trained. 100% rate as very good to excellent
- Gardening in the 'Big Dry' with Carolyn Blackman – 180 people. 100% rate as excellent
- Farm Gate – 120 farm families 'cold called'. Evaluation with 60 families, 79% more likely to access services

SGG PCP Drought initiatives are replicated in Barwon SW and across the state

- **Climate Change** Framework published; University of Melbourne Research partnership; research links to Canada; Heatwave pilot funding; enhanced links to regional environmental sustainability networks.

## ii) Water fluoridation

- Strong international evidence as effective public health measure
- PCP leads stakeholder process with DHS Fluoridation Team
- Ministerial Direction for Hamilton achieved February 2008 (within 6 months of project start)

## ii) Arts

- New funding - Arts Victoria and VicHealth (\$60,000).
- Mapping survey - 100 artists/organisations
- Arts Network – 35 people meet quarterly
- 'Arts News' – monthly newsletter of training/funding/events/exhibitions
- SW TAFE courses commence at Hamilton campus
- Arts for Health – early work
- Stage 1 of 'Creative Web' commenced – professional development for local artists, community participation major event

## iv) GFYL

- WDHS, SG Shire and PCP – 13 workplaces; positive infrastructure links with local govt

## Strategic Priority 2 - System efficacy

### i) Integrated Planning

- Area Based Planning develops Health and Wellbeing dataset
- Integrated Planning Sub-Committee established, coordinates interagency planning:
  - Alcohol and Drug Plan
  - 'Place based' planning project at Merino –community development approach to reducing disadvantage via i) community participation, ii) engagement climate change, iii) community participation process
  - Agency plans, eg. local government
  - Discussion/coordination funding submissions

### ii) Integrated Chronic Disease Management

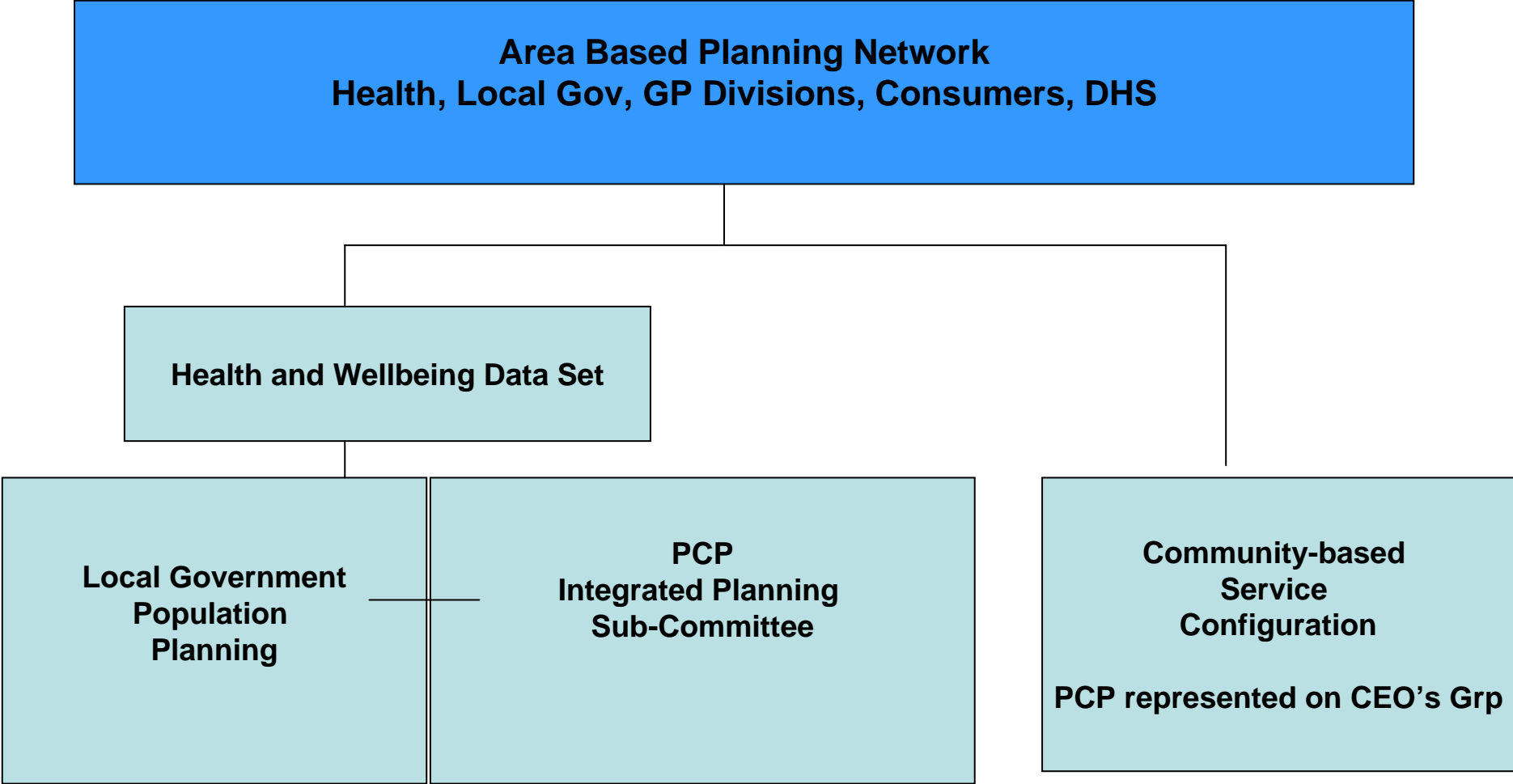
- Hamilton and Portland networks – broad range (health, GPs, sport, mental health)
- Successful pilot providing \$ support to Hamilton Medical Group for establishment Practice Nurse – to be extended to other towns
- Focus on Portland – establishing HARP
- Planning commenced to map the 'consumer journey' through services – includes consumer focus groups and interviews to identify barriers to service access

### i) Service Coordination

- Review templates for child and family services – increasing links via ChildFIRST
- E-referral enhanced via ICDM initiatives – IT linkages established between acute, community health, allied health and GPs (work in progress)



# Integrated planning



## Strategic Priority 3 - Effective and efficient partnership

### Staffing/Office

- 5 new staff – Sally Jarvis and Kay Diana (admin); Elise Armitage (Arts); Joanne Brown (Community Development); Vicki Barbary (ICDM)
- 3 new babies – Fiona Heenan, Erin White and Monique Sobey
- New office – independent main street location

### Partnership evaluation

- 100% satisfaction – admin/leadership
- Enhanced linkages Local Govt – including Councilors & staff (Drought/climate change; Arts, 'Go For Your Life', Municipal Public Health Planning, Alcohol and Drug Plan)

### Activity Evaluation

- 100% activities evaluated
- 100% rated as good to excellent

### Communication/profile

- Average 1 media hit/week
- SGG PCP featured at state, national, international conferences
- Strong reputation for success and achievement
- Awards
  - Finalist SG Powercor Awards (Drought Committee)
  - Silver Award Victorian Public Healthcare Awards (Falls Prevention Project) -1<sup>st</sup> PCP to achieve finalist status

### Consulting Services

- Demand for 'fee for service', particularly local government

## Strategic Priority 4 - Financial Viability

**Core funding** not sufficient to sustain core activities

**New funding:**

Alcohol and Drug Plan - \$50,000 (Dept Human Services)

Healthy Relationships - \$30,000 (Brophy Youth Services)

Community Arts - \$40,000 (Arts Victoria) + \$20,000 (VicHealth)

Heatwave - \$26,000 (Dept Human Services) for 08/09

Gambling – \$53,000 (Dept of Justice) for 08/09

**Investment** of \$250,000 (equivalent to core funding)



# Foundation for –

**Climate change leadership – international research links**

**Further progress on Integrated Planning**

**Consumer voice**

**Emerging focus:**

- **early childhood** (mental health state framework)
- **'place based' projects to close the gap** (WHO health inequalities)
- **water/energy/food** (climate change)
- **links to nature** as therapy (health gains – using our assets)



**Southern Grampians & Glenelg**  
Primary Care Partnership

# Feedback

## Drought

“Our local Drought Committee is successful in making decisions, rather than just talking about it.”

**Member, Southern Grampians and Glenelg Drought Committee**

## Water Fluoridation

“It is great news that we are actually going ahead with fluoridation here. I did not ever believe that it would happen.”

**Jennifer Barke, Hamilton Dentist – a long standing advocate for water fluoridation**

## Chronic Disease Management

“This PCP Team demonstrates a high level of energy and enthusiasm. They have successfully engaged a broad and diverse range of stakeholders in their chronic disease management work and are leading some terrific innovations that are delivering real benefits for people in their catchment. I get the sense that they see this as ‘all in a day’s work and nothing special’. My experience of working with PCPs across the state is that such outcomes are not easily achieved and that their achievements are highly commendable.”

**Kate Gilbert, Industry Adviser with DHS**

## Arts

“The Southern Grampians and Glenelg PCP has shown great leadership in its arts initiatives. This is an excellent example of health and community services taking the lead to assist communities struggling to adjust to change through drought and economic shifts.”

**Carolyn Rundle, Practicing Artist**

## Climate Change

“The value of the PCP’s Climate Change Framework is that it provides practical steps to addressing a major problem.

To be frank, the work of the PCP is path breaking. There is much interest in it here in Canada and we are very keen to develop collaborative links that might advance work in both countries.”

**Professor Penny Hawe, University of Calgary**

# Members –

<p><b>Western District Health Service</b>            Victorian Public Healthcare Award 2008 – Primary Health Service            National Centre for Farmer Health</p>	<p><b>Mulleraterong</b>            Southern Grampians Powercor Award 2008 – Community Enterprise</p>
<p><b>Portland District Health</b>            100% local primary schools within Healthy Schools Networks            Victorian Public Healthcare Award 2007 – ‘Towards a Healthy Heart’</p>	<p><b>Community Connections</b>            Family Relationship Centre            Reading Discovery</p>
<p><b>Glenelg Shire</b>            Planning – community/agency involvement</p>	<p><b>Kyeema</b>            Partnership links            Service development</p>
<p><b>Southern Grampians Shire</b>            GFYL - infrastructure links</p>	<p><b>Glenelg Outreach</b>            Partnership links</p>
<p><b>Casterton Memorial Hospital</b>            Sustainable strength and balance programs            Advocacy for food security – school fruit program</p>	<p><b>Bush Nursing Centres - Dartmoor and Balmoral</b>            Facility development</p>
<p><b>ASPIRE</b>            Service development Tasmania</p>	<p><b>Brophy Youth Services</b>            Headspace            Facility development</p>

# Conclusion

## **Strong outcomes for 2007-2008**

- leadership on drought, fluoride, arts, climate change
- positive evaluation results
- recognised at state/national/international conferences
- award finalists
- research linkages – University Melbourne/Canada

## **Reputation for success and achievement**

## **Diverse stable partnership**

## **Financial viability**

