

# Climate Change Adaptation – Framework for local action

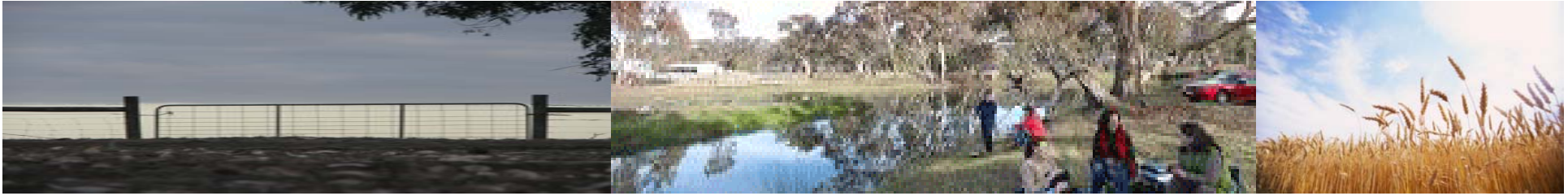
**Rosie Rowe**

Executive Officer

Southern Grampians & Glenelg

Primary Care Partnership

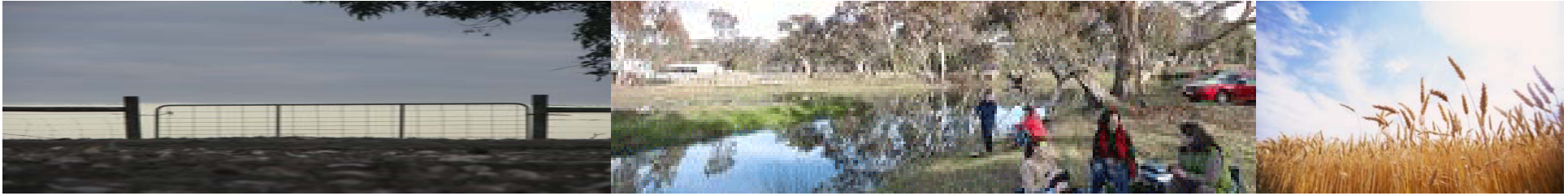




## Content

- Adaptation Framework
- Links to local government
- Example of local initiatives





**Goal** - communities that are resilient to change

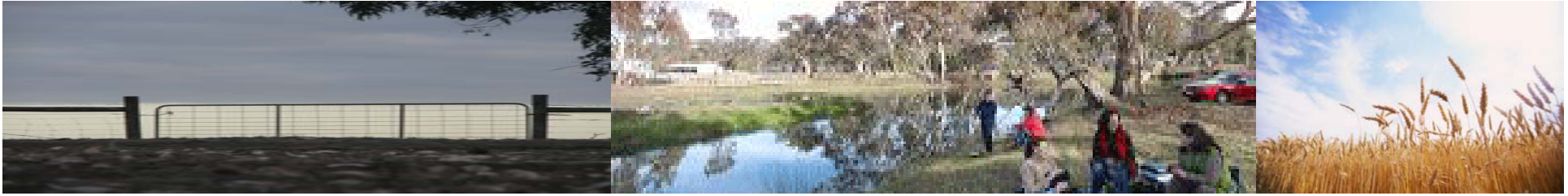
**Framework provides:**

- strategic planning tool
- framework for action

**Developed with:**

- health, welfare, local government, natural resources, agriculture, environment etc

**Is applicable to any area**

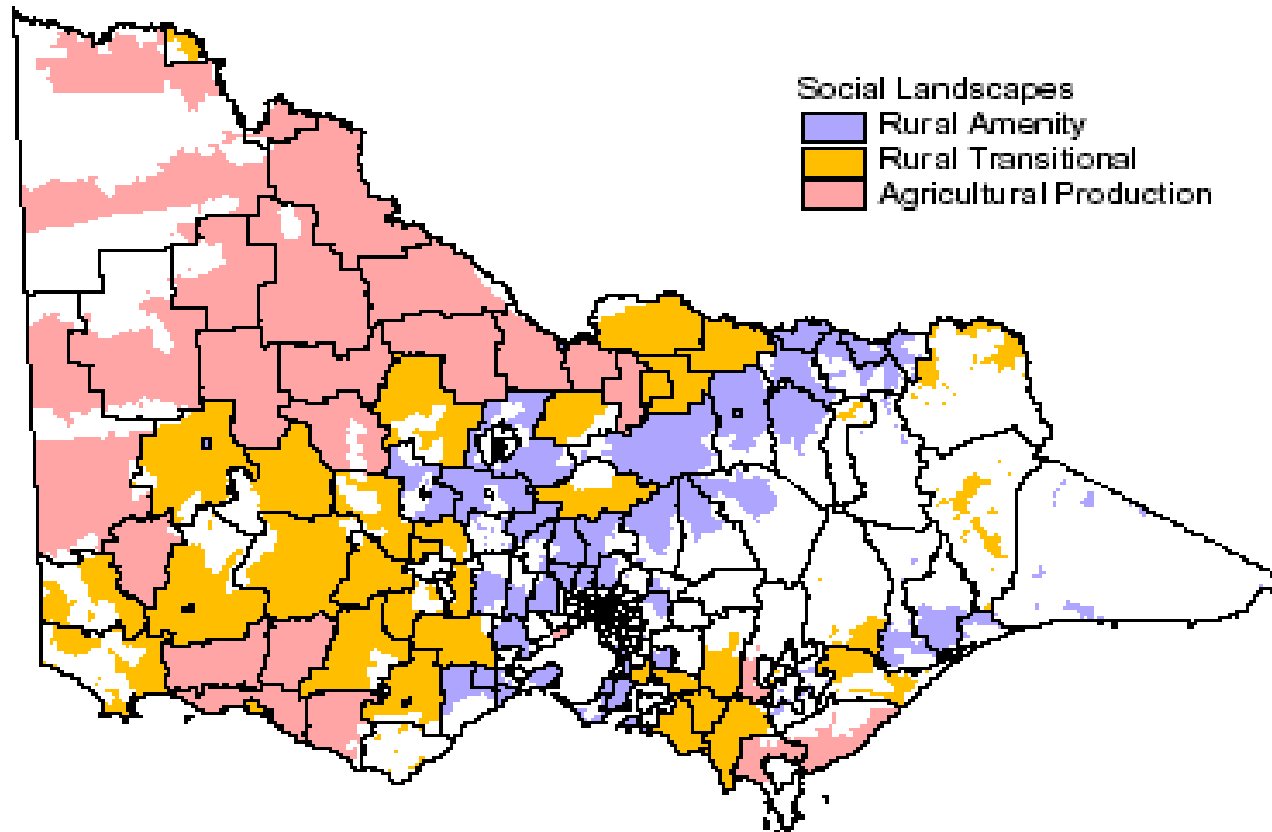


## Framework overview

- **Context** – global, national, state
- **Local Impacts** – who is most vulnerable
- **Priority issues**
- **Action Plan**

---

## Local Impacts – social/demographic landscapes



Source: Barr, 2005

---

---

## Local impacts

### Physical

- temperature, rainfall, winds, frost

### Health

- disease vectors, heat related illness
- stress, anxiety, mental health
- socio-economic (utility prices, enterprises, infrastructure)
- leisure/recreation
- reduced connection to nature

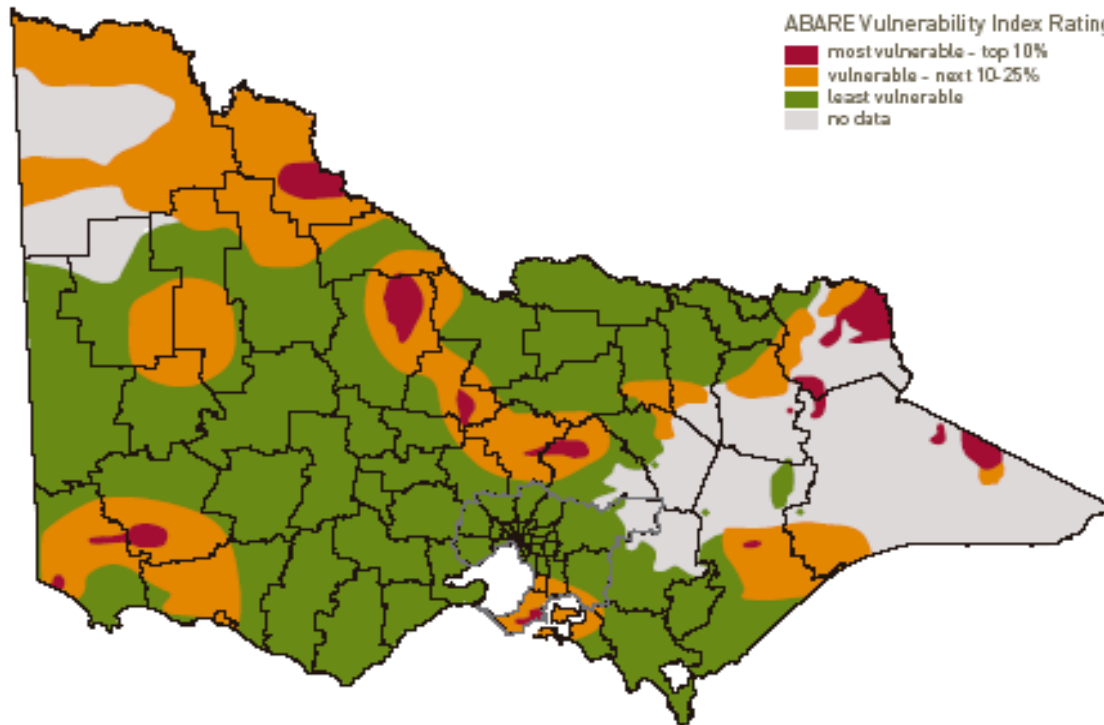
*Sources: DHS, CSIRO, DSE, VCOSS, research nature links  
(Maller et al)*

---

# Who is most vulnerable from impact

education levels - internet use, Landcare membership  
economic factors – income sources, average income, income risk  
environmental factors -land degradation, pastures

Level of community vulnerability in the face of structural adjustment<sup>1</sup>  
Agricultural regions of Victoria



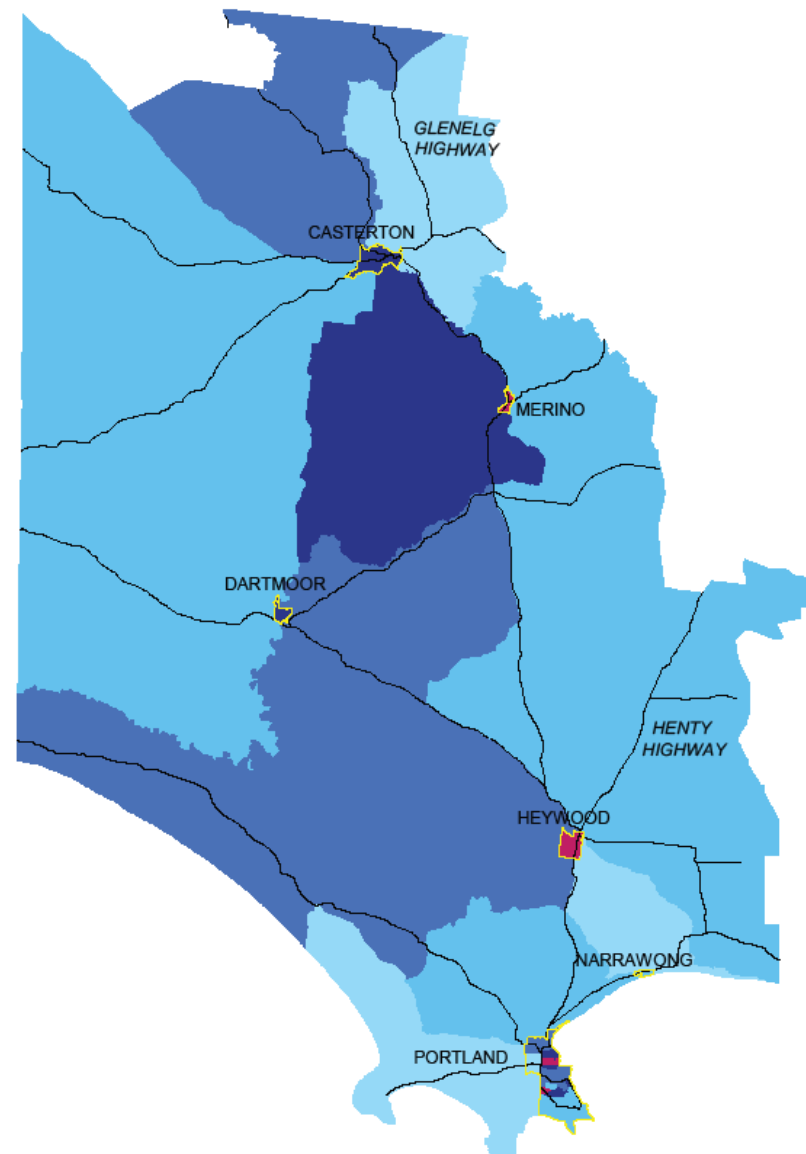
*Regional Matters: An Atlas of Regional Victoria 2005*, Victorian Government Department of sustainability and Environment, 2005.

## Glenelg Shire, SEIFA Index of Relative Socio-economic Disadvantage, 2006

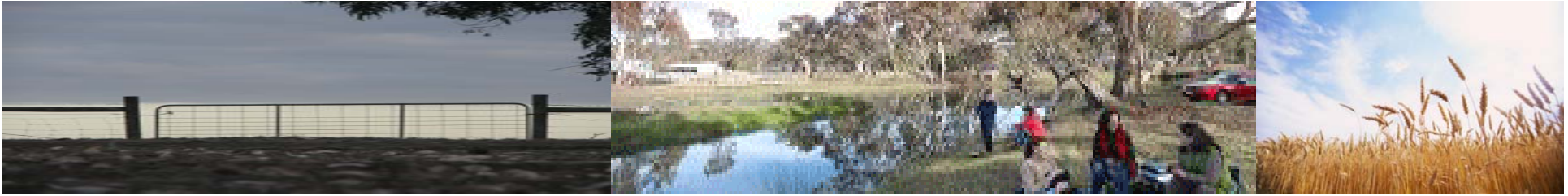
### Collection Districts by Victorian decile

- 9th and 10th deciles (Least disadvantaged)
- 7th and 8th deciles
- 5th and 6th deciles
- 3rd and 4th deciles
- 2nd decile
- 1st decile (Most disadvantaged)
- Unranked

Town boundary



Source: 2008, ABS, Cat no. 2033.0.55.001 Socio-economic Indexes for Areas (SEIFA), Data only, 2006; DPCD, 2008, Towns in Time



## Who is most vulnerable?

- **Low socio-economic** – prices, access, living conditions
- **Farm families** – climate variability
- **Small towns** - geographically/socially isolated

*Sources:* Sustainable Farm Families, VCOSS, WHO

# Priority Issues

## 1. Direct Issues

- Household energy
- Household water use
- Transport
- Affordable food supply
- Community strength and resilience

## 2. Indirect Issues

- Farm Families
- Small Towns



# What can we do

## – Ottawa Charter for Health Promotion

Issue	Interventions
Household energy	insulation initiatives
Household water	water tank strategies
Affordable food supply	competition in food retailers; local food production
Transport	active transport strategies
Community resilience	internet access, economic resources

= adaptation makes good sense at any time

---

# Links to Local Government

## Plans/Strategies:

- Municipal Public Health Plan
- Sustainability Strategy
- Emergency Management Plans – Heatwave
- Economic Development

## Service Delivery:

- HACC
- Maternal/Childhealth

## Special projects/advocacy:

- Neighbourhood Renewal
-

---

# Implementation

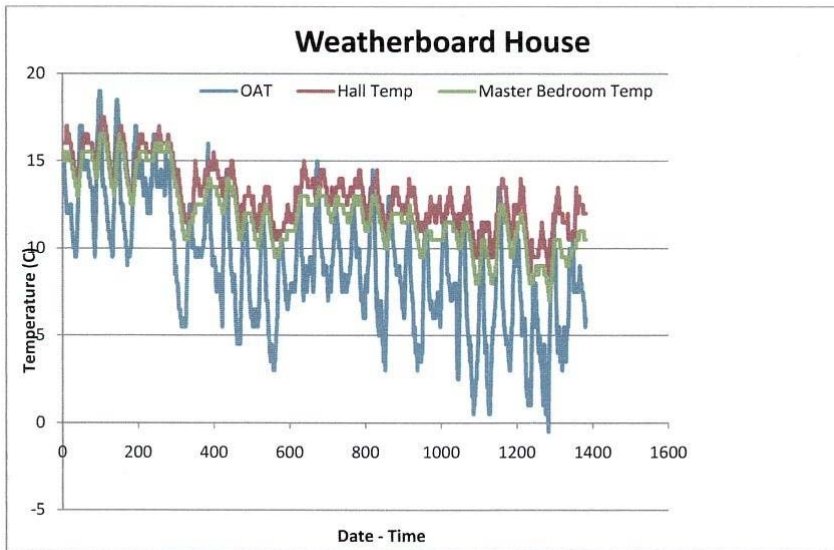
- **‘Place based’ project**

Step 1 – Community development process

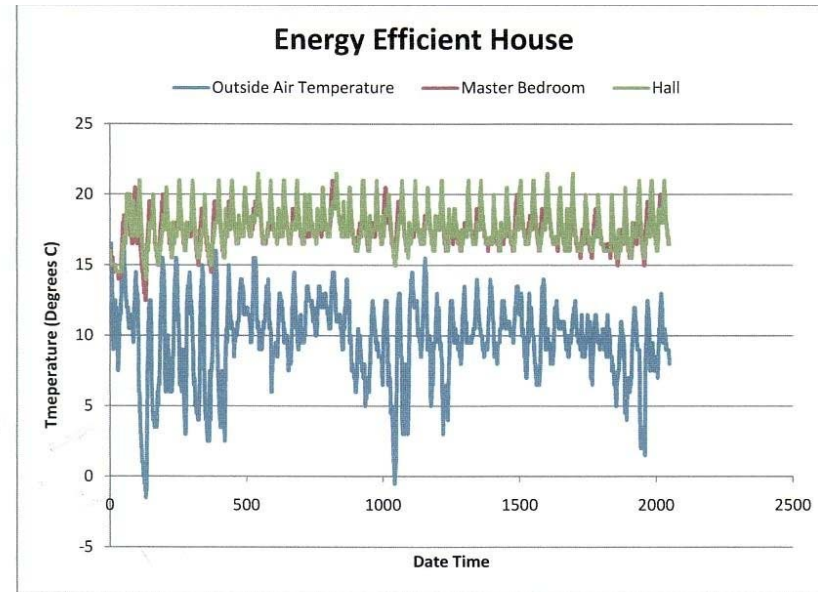
- i) ‘i-button’



Temperature data comparison between unheated rooms in a typical weatherboard house in Hamilton, Victoria, and a recently constructed 8+ star rated house.



Data collected during May, June and July 2007 (OAT = Outside Air Temperature)



Data collected during May, June and July 2008

---

# Implementation

- **‘Place based’ project – highest vulnerability**

## **Step 1 – Community development process**

- i) ‘i-button’
- ii) Practical response – energy (then water, food, transport)
- iii) Service access

## **Step 2 – ‘Scale up’ action Shire-wide**

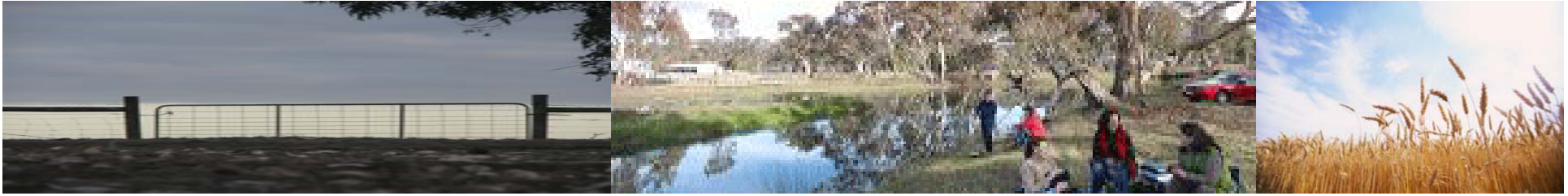
Benefits – complex problem to small steps

- focuses on ‘key concern’ to community
  - avoids ‘feel good’ community meetings
-

---

# Research - emerging

- University of Melbourne – McCaughey Centre  
4 research sites across Victoria
  - Canada – parallel community
  - Proposal for other international sites
-



**Rosie Rowe**

**[rosie.rowe@wdhs.net](mailto:rosie.rowe@wdhs.net)**

**T: 5551 8471**

**[www.sggpcp.com](http://www.sggpcp.com)**

